



CC-6000 AIR COMPRESSOR MASTER CONTROL



THE ALGORITHM MAKES THE DIFFERENCE™

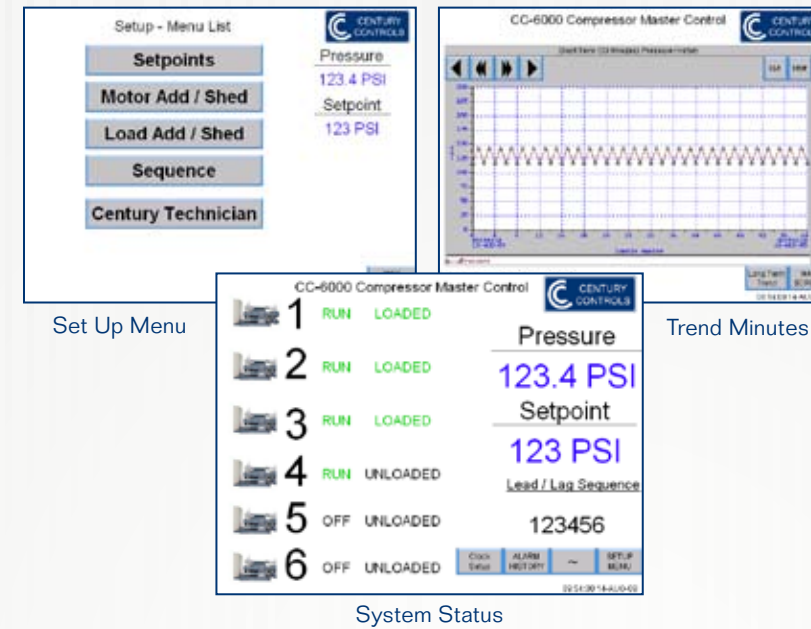
Introduction

For over 30 years, Century Controls has developed and manufactured superior systems that help boiler and air compressor owners save fuel and limit maintenance costs, while reducing greenhouse gas emissions. The Company has a proven product line with the flexibility required to fit many unique applications. Now with increased attention placed on fuel costs, it is imperative that compressed air users deploy the best controls strategies for the job.

The Century Solution

Century Controls CC-6000 Air Compressor Master Control is a proven way to optimize a series of air compressors to meet system demands. The patented algorithm controls the operation of the compressor system by making critical lead/lag and load/unload decisions. The controller continuously studies system air pressure, the direction to or from setpoint and the rate of pressure change, resulting in tight control to setpoint with the correct number of compressors running. This sophisticated controller will cut your energy costs by 10-20% when compared to standard staggered setpoint controls. The controller achieves this energy savings by minimizing the time compressors run unloaded and allowing lower setpoint values because of more precise pressure control. The CC-6000 Air Compressor Master Control is an ideal solution for existing systems utilizing multiple compressors from different manufacturers. The Century Controls solution will work with all compressor manufactures equipment providing a proven flexible solution for today's needs and future requirements..

Touch Screen Display



Key Features and Benefits

LOWER FUEL COSTS

Minimizing the time compressors spend running unloaded saves substantial energy. Tight control of pressure setpoint allowing the system to run at lower pressure setpoints further reducing the energy usage.

LOWER MAINTENANCE COSTS

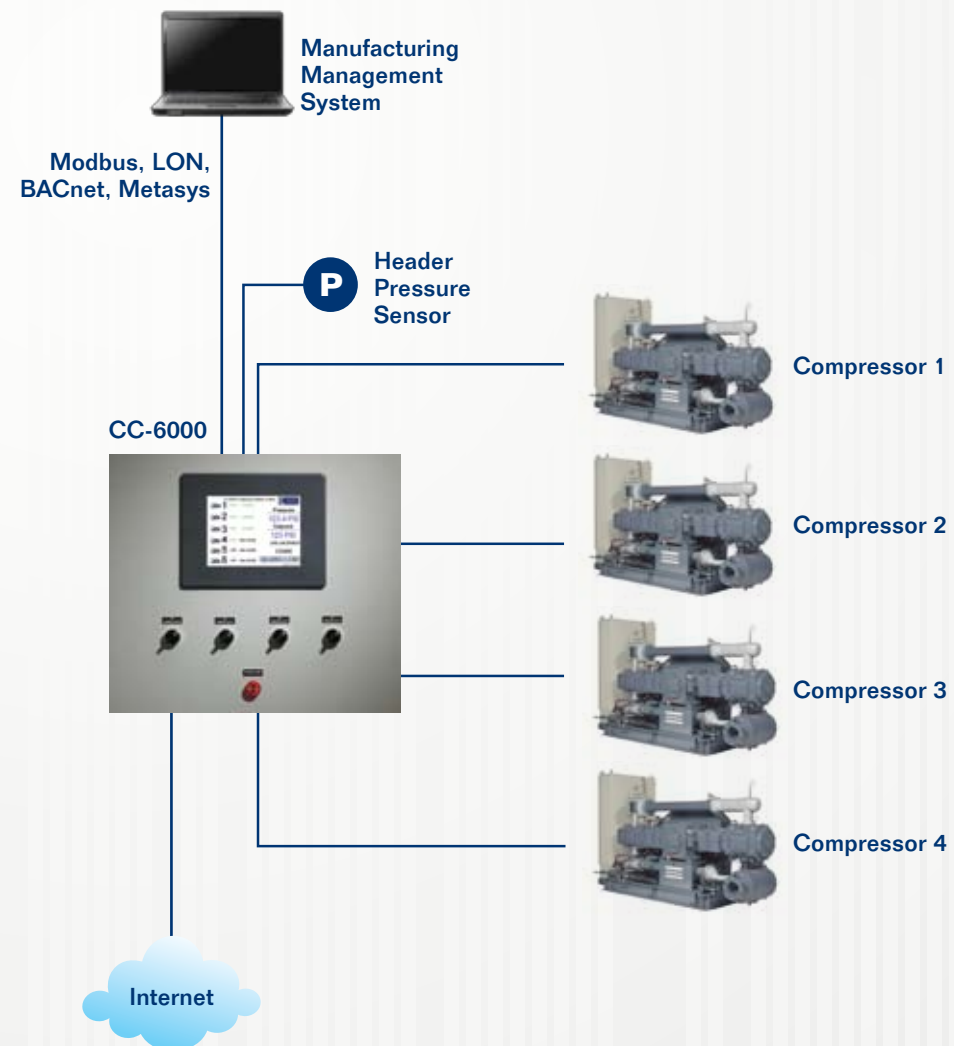
Programmable limits to minimize compressor cycles per hour. Automatic rotation features to change lead/lag sequence and provide even usage on compressors.

SUPERIOR VERSATILITY

Integrates with all types of compressors and compressor manufactures. Existing controls left in place for manual operation if necessary.

REDUCE EMISSIONS

Reduces greenhouse gas emissions by reducing fuel consumption.



Communications

The CC-6000 can easily communicate operating conditions to any building or manufacturing management system. Data is shared via any common protocol, including Modbus, BACnet, LON or Metasys, to enable real-time monitoring and trending of your compressed air system.



CC-6000 Patented Compressor Master, smart decisions for better control.

The majority of existing multiple air compressor systems employ controls with very little coordination. The CC-6000 employs precise control and does not allow several compressors to run for hours unloaded and uncoordinated, wasting thousands of dollars in energy. Unlike other systems that perform add & shed loading by pressure offsets and time delays, the CC-6000 uses a "fuzzy logic" algorithm that continuously studies the process variable and the rate of pressure change, only making changes in the state of the system when it is required. Site configurable control parameters and setpoints allow each panel to be programmed for specific job requirements in the field.



Optimize your Compressed Air System

- Multiple Override and Time Delay Setpoints for add and shed decisions
- Individual setpoints for increasing or decreasing load conditions
- On site configuration to meet system requirements
- Automatic alternation of compressors
- Programmed limits on on/off cycles
- Interface with multiple manufacturers and compressor types
- Automatic or manual operation of compressors
- Multi-level password protection
- System performance trending
- Alarms with email and pager communication
- Color or grayscale touch screen displays
- Remote Ethernet monitoring and management

How to Purchase

Providing superior customer assistance, Century Controls product line is sold through authorized local representatives who understand the customer needs and the product solutions. A complete list of representatives is available online at www.centurycontrols.com.

Represented by:



12510 Fletcher Lane No., Suite L,
Rogers, Minnesota 55374
Phone 763.428.1201 • Fax 763.428.1495
www.centurycontrols.com
Email: info@centurycontrols.com